



Arctic Science Partnership (ASP) meeting

8-9 October 2019
Reykjavik, Iceland

Looking back





ARCTIC SCIENCE PARTNERSHIP



ADMINISTRATION

OPERATIONS

COMMUNICATION

EDUCATION

ABOUT ASP

> **Vision & Mission**

> ASP Structure

> Membership

> Associate members

> Isaaqik Arctic Gateway

CONTACT US

EMPLOYMENT

ALFRED-WEGENER-
INSTITUT (AWI)

ARCTIC RESEARCH
CENTRE (ARC)

CENTRE FOR EARTH
OBSERVATION SCIENCE
(CEOS)

GREENLAND INSTITUTE
OF NATURAL
RESOURCES (GINR)

LUND UNIVERSITY (LU)

UNIVERSITY OF
SOUTHERN DENMARK
(SDU)

SHOW INFO



First ASP Annual Meeting, 12-16 Nov. 2012, Gimli, Canada. Photo: Peter Bondo Christensen

VISION & MISSION

Vision

The Arctic Science Partnership will be a leading consortium on climate, cryosphere, ecosystems, and human interactions through research, monitoring and education.

Mission

To facilitate and integrate active scientific cooperation between the ASP and its members.

Strategies

- Joint projects, field campaigns, workshops
- Sharing facilities (labs, instruments, field stations, logistics, ships)
- Joint positions (staff, technicians, students, visiting scientists)
- Joint observatories and data sharing
- Joint publications and acknowledgements
- Education, outreach and capacity building in the Arctic
- Collaborative work on industry relevant assessments
- Development of new environmental Arctic technologies
- Information dissemination

Memorandum of Understanding

The initial idea of the ASP cooperation was created during a [meeting in Winnipeg](#) in June 2011.

ASP RESEARCH

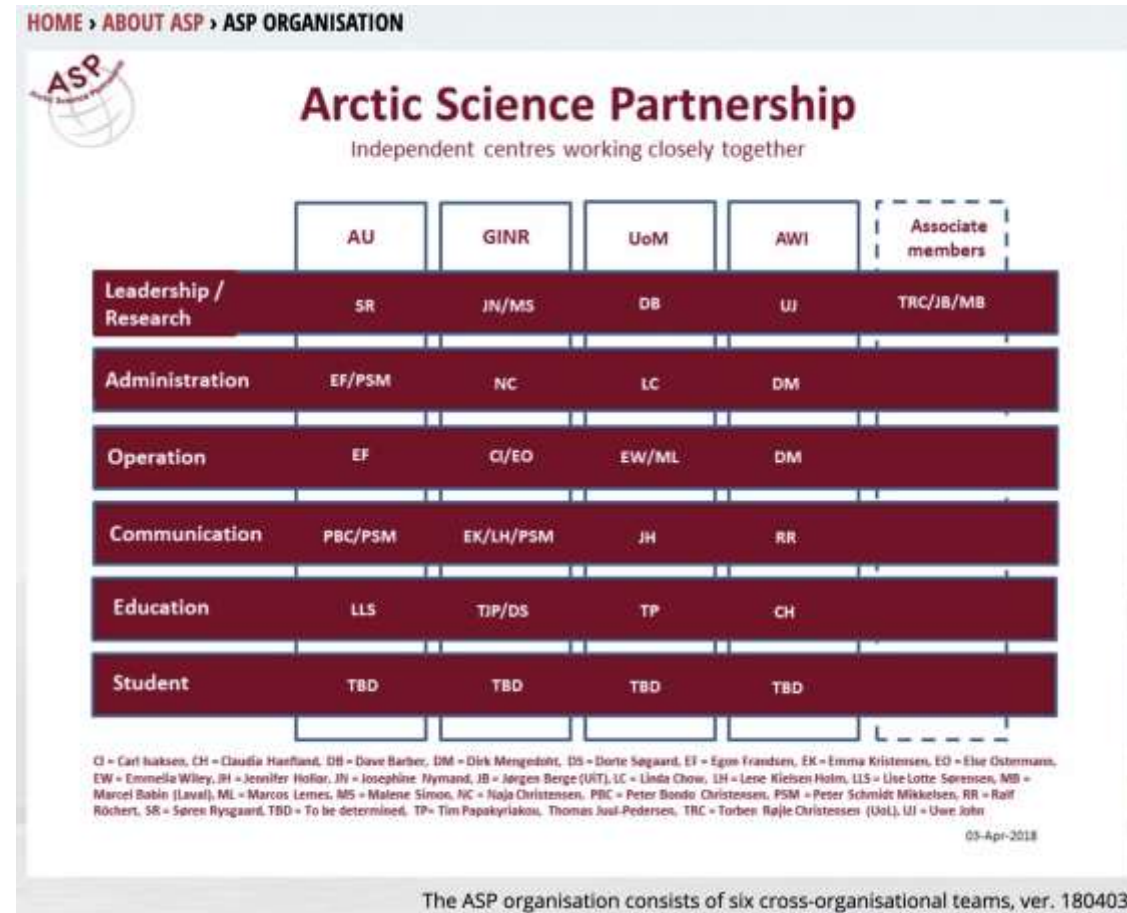
The Arctic Science Partnership is a leading consortium on climate, ice, ecosystems and human interactions. Across water, land and atmosphere, ASP investigates:

- Ongoing changes in ice-ocean interactions, snow and ice extent, permafrost thaw and their combined consequences for Arctic ecosystems and the benefits we receive from the systems
- Feedbacks between the Arctic and Earth climate systems
- Proxies for predicting future changes in ocean currents, weather systems and ecosystems
- Impact of climate change on the Arctic population's lifestyle and disease patterns
- Pollutant transport to the Arctic and exposure consequences on ecosystems and humans

Seven Guiding Questions for ASP Research

1. How does climate change impact the Arctic cryosphere and what are the implications for the cryosphere's interactions with land, ocean and atmosphere
2. What controls the marine and atmospheric transport of pollutants to the Arctic?
3. How can proxies of palaeoclimate/ecology inform us of changes in ocean current, wind systems, precipitation, future Arctic climates and their ecological consequences?
4. What are the consequences of these drivers (1-2) for i) ecosystem production and function? and ii) chemical contaminants affecting ecosystems and human exposure?
5. What are the impacts of the transition and environmental changes on the Arctic population's lifestyle and changes in disease patterns?
6. What will be the combined effects of natural and anthropogenic forcing on ecosystems and their services?
7. What are the feedbacks between the Arctic and Earth climate system

We connected people and functions



ASP homepage and creating overview

The image displays two web interfaces related to Arctic science. The left interface is the ASP homepage, featuring a navigation menu on the left with links to HOME, NEWS & EVENTS, RESEARCH..., ADMINISTRATION, OPERATIONS, COMMUNICATION, EDUCATION, ABOUT ASP, CONTACT US, and EMPLOYMENT. Below these are links to partner organizations: ALFRED-WEGENER-INSTITUT (AWI), ARCTIC RESEARCH CENTRE (ARC), CENTRE FOR EARTH OBSERVATION SCIENCE (CEOS), GREENLAND INSTITUTE OF NATURAL RESOURCES (GINR), LUND UNIVERSITY (LU), and UNIVERSITY OF. A 'SHOW INFO' button is at the bottom. The main content area has a header 'ARCTIC SCIENCE PARTNERSHIP' and a description: 'THE ARCTIC SCIENCE PARTNERSHIP is an extensive international research collaboration, bringing together the world's leading Arctic scientists.' The right interface is the ISAAFFIK search page, titled 'ISAAFFIK - the arctic gateway'. It features a search bar, a 'Search' button, and a 'Type' dropdown menu. Below the search bar is a navigation bar with tabs: Infrastructure, Projects, Logistics, Courses, Jobs, People, and Data-Links. The main content area contains a search result overview and a 'Search' button. At the bottom, there are four sections: 'Share logistics' (Planning an expedition to remote locations in the Arctic?), 'Events' (Upcoming events concerning Arctic research, logistics, education and more...), 'APPLY FOR SUPPORT' (Need logistic support or support for), and 'Chat on Facebook' (Enter the ISAAFFIK chatroom to participate in creative discussions, knowledge sharing, and ideas).

ASP

ARCTIC SCIENCE PARTNERSHIP

THE ARCTIC SCIENCE PARTNERSHIP is an extensive international research collaboration, bringing together the world's leading Arctic scientists.

ISAAFFIK - the arctic gateway

Facilitating Arctic Scientific Collaboration

Infrastructure Projects Logistics Courses Jobs People Data-Links

Start a search and get overview of **Arctic research infrastructure**, including habitations, research facilities, gateways, and more. Use **Type** to filter your selection. View search result on either list or map. Ask your local ISAAFFIK representative to add new research infrastructure items.

Enter search

Search

Type

Share logistics

Planning an expedition to remote locations in the Arctic? Post your own travel plan or travel idea in

Events

Upcoming events concerning Arctic research, logistics, education and more... All users are free to add and

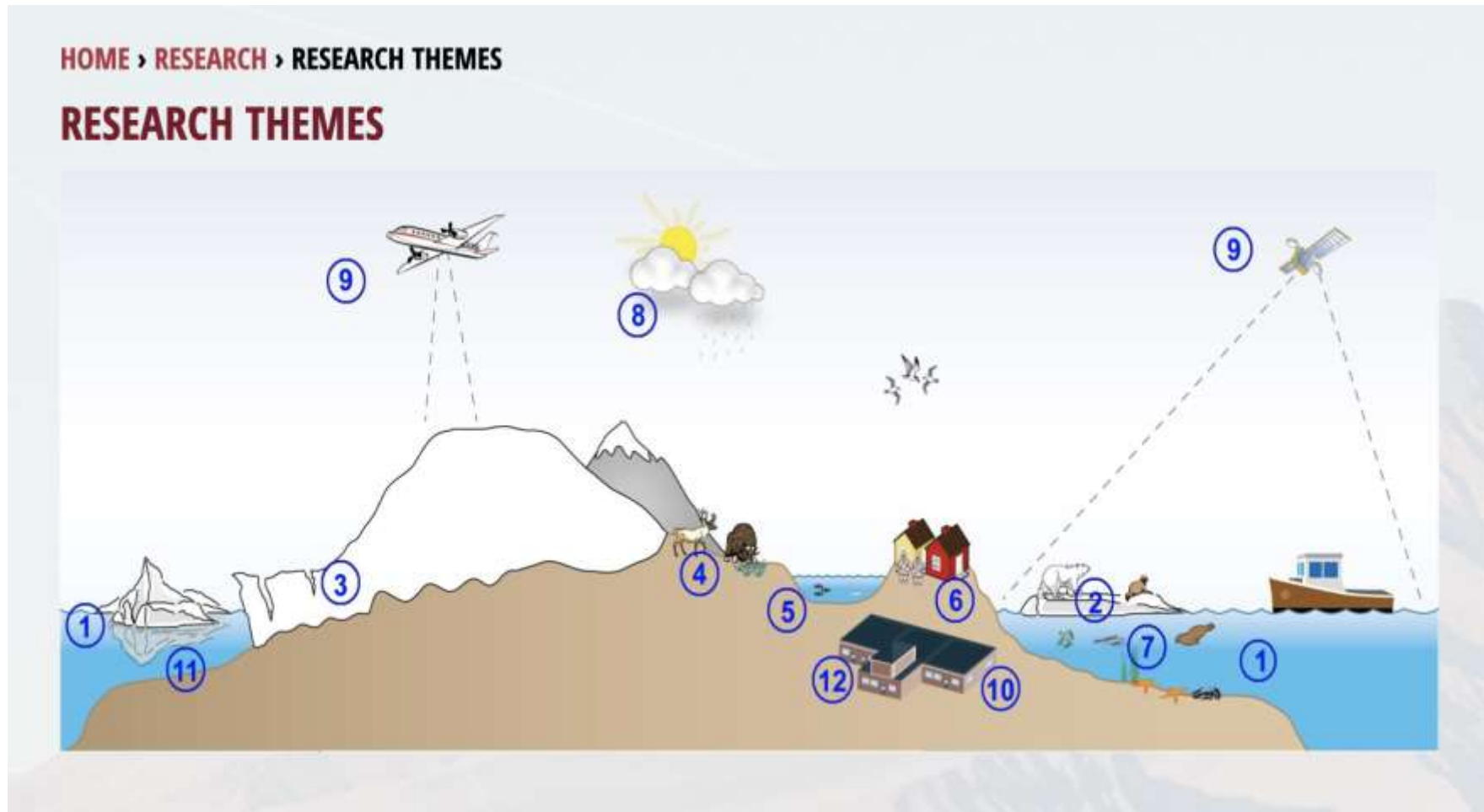
APPLY FOR SUPPORT

Need logistic support or support for

Chat on Facebook

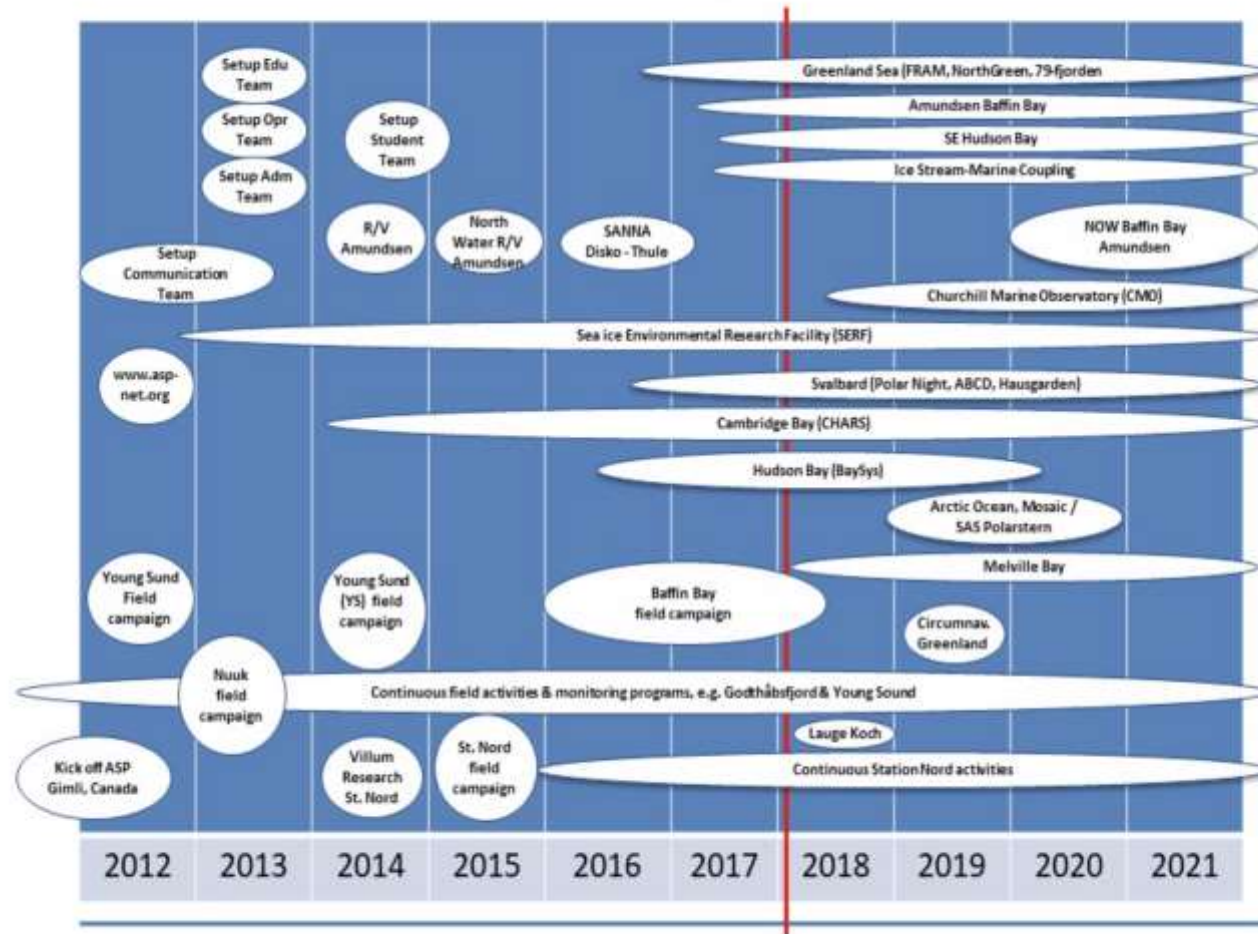
Enter the ISAAFFIK chatroom to participate in creative discussions, knowledge sharing, and ideas

A holistic and interdisciplinary approach





ASP field roadmap 2012-2021

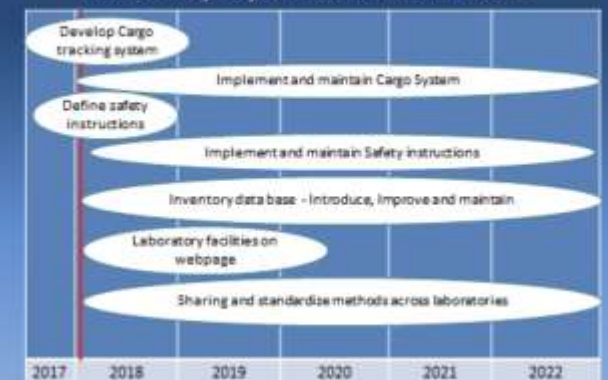


ASP Campaign Roadmap, January 2018

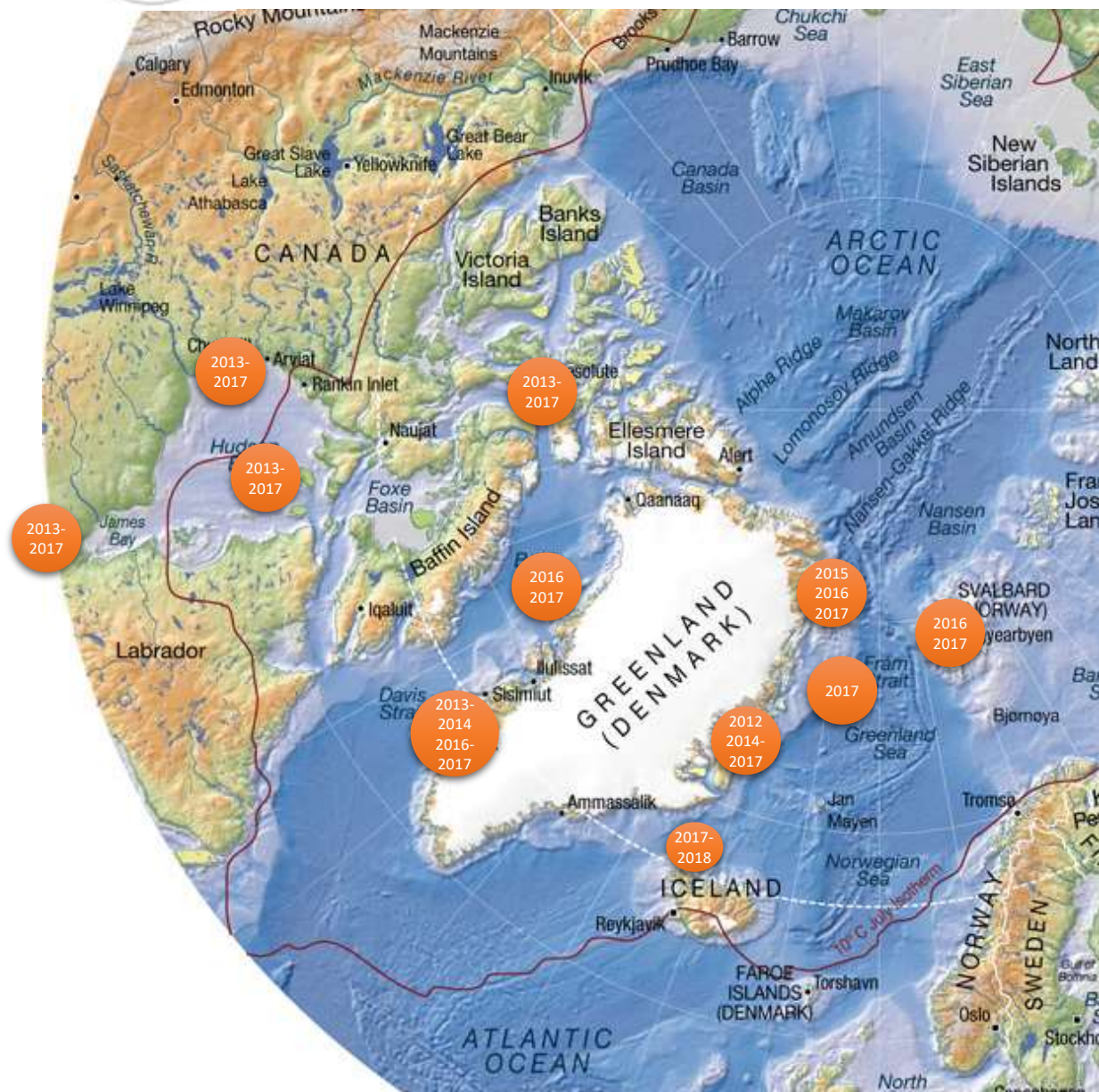
HOME • OPERATIONS • ROADMAP

ROADMAP

Roadmap Operations 2017-2022



ASP Field Campaigns/projects 2012-18



2012: Young Sound

ASP Start-up campaign - March

2013:

Nuuk – 26 projects in Nuuk area

SERF – 3 projects

2014:

Young Sound – 14 projects

SERF – 3 projects

Nuuk – 1 project

Cambridge Bay – 14 projects

Amundsen – 5 projects

2015:

VRS Station Nord – 18 projects

Young Sound – 1 project

SERF – 3 projects

Amundsen – 7 projects

Green Edge – 2 projects

2016:

VRS Station Nord – 5 projects

Young Sound – 2 projects

SERF – 7 projects

Baffin Bay – 7 projects

Nuuk – 9 projects

Svalbard – 4 projects

Other projects – 7 projects

2017-2018:

VRS Station Nord – 9 projects

Young Sound – 4 projects

SERF – 6 projects

Greenland Sea – 4 projects

Nuuk – 8 projects

Svalbard – 5 projects

Baffin Bay – 8 projects

Other projects – 6 projects

Why we are here

- To get a short overview of each institutions activities 2018-19.
- Follow-up on common 2018-2019 ASP projects.
- To enable feedback on ASP collaboration 2018-2019.
- Present ASP projects and initiatives 2020 and forward.
- To update road maps
- To discuss ASP organization – is there a need for a change?
- To prepare for ASP 10 yr's anniversary in 2020
- To have fun and enjoy being together