

AWI ALFRED-WEGENER-INSTITUT
HELMHOLTZ-ZENTRUM FÜR POLAR-
UND MEERESFORSCHUNG

HIFMB Helmholtz Institute
for Functional Marine Biodiversity
at the University OLDENBURG

ASP

What is in the bucket? Molecular assessment of

Introduction to Environmental DNA Analysis

Nuuk M

Uwe John & Sylke Wohlrab
Alfred-Wegener-Institut (AWI)
Helmholtz Institut für Funktionale Marine Biodiversität (HIFMB)







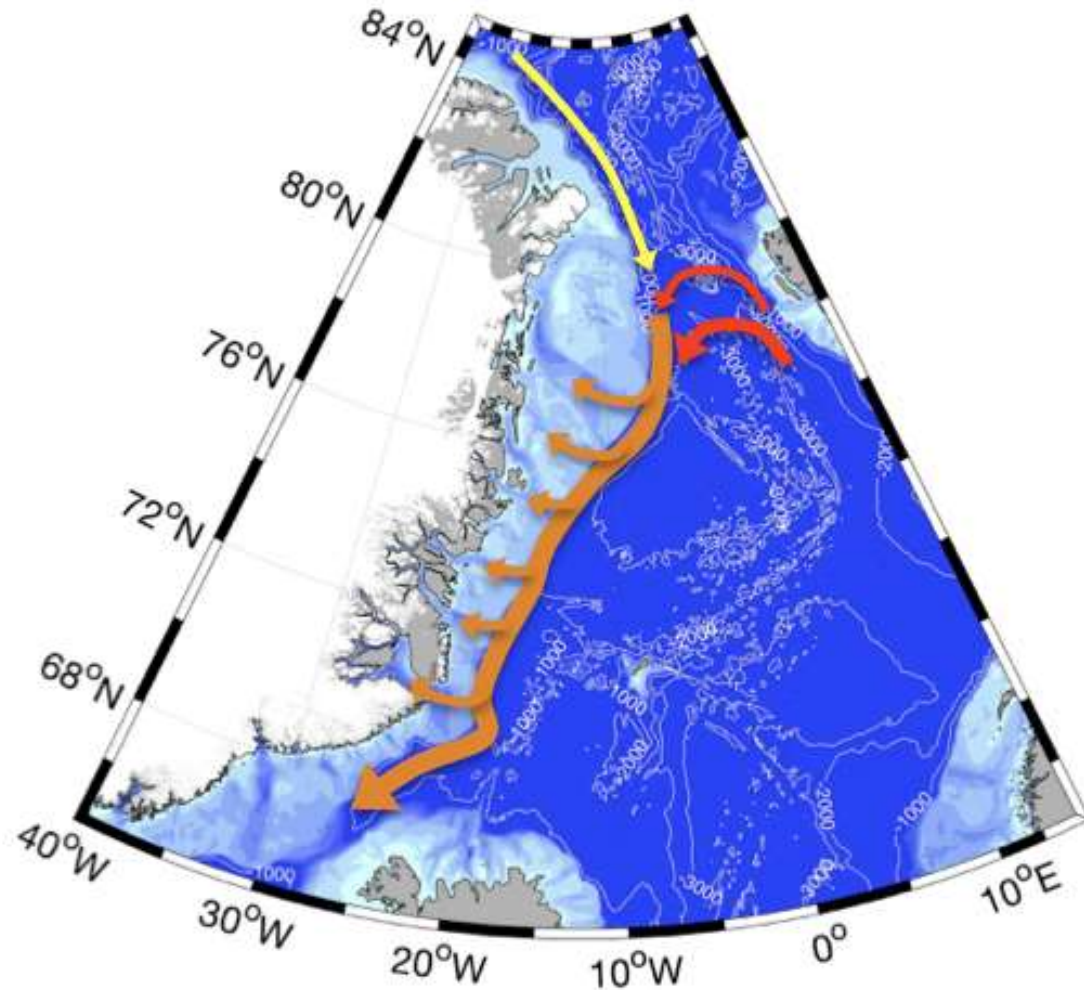


Access of Atlantic Water to Greenland glaciers (A2Green)

Rebecca McPherson, Janin Schaffer, Claudia Wekerle,
Ralph Timmermann, and Torsten Kanzow



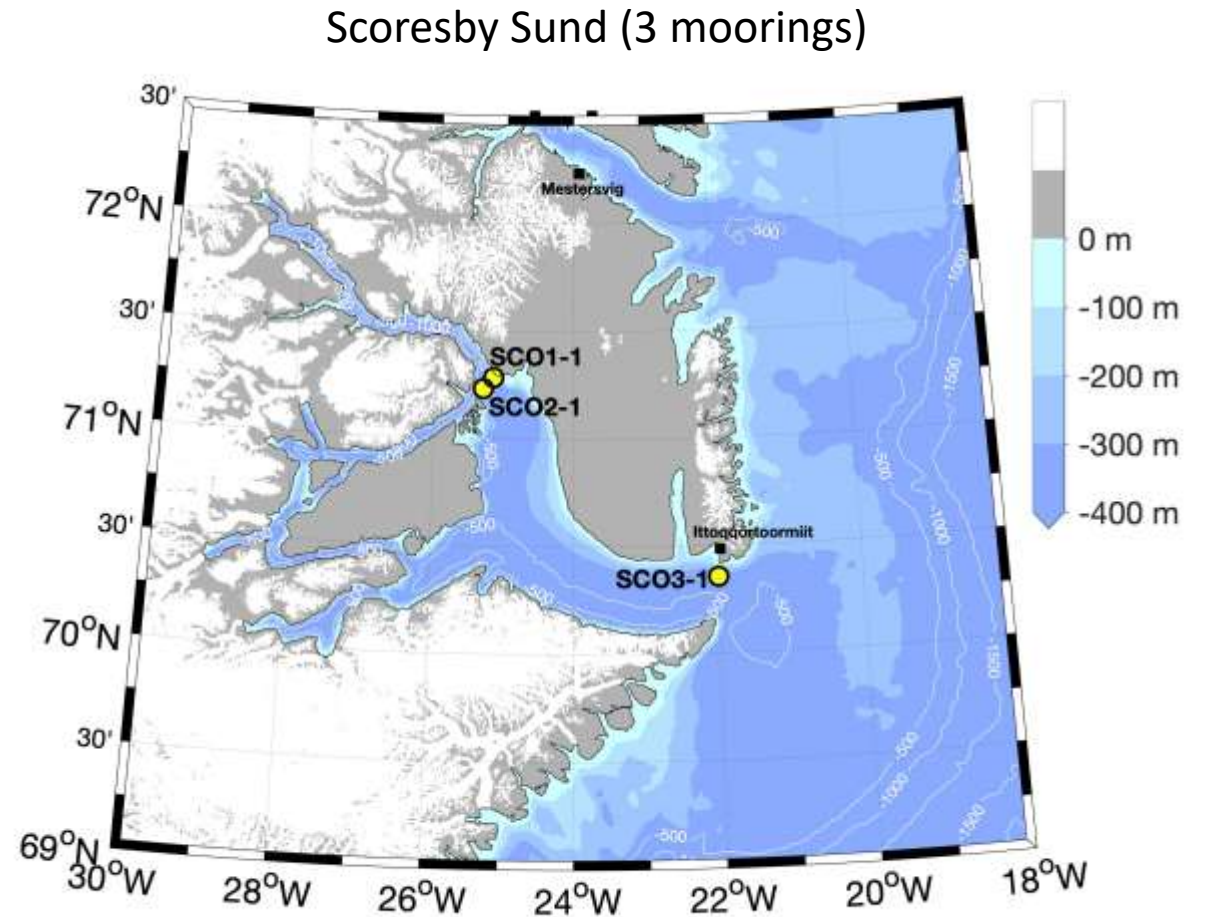
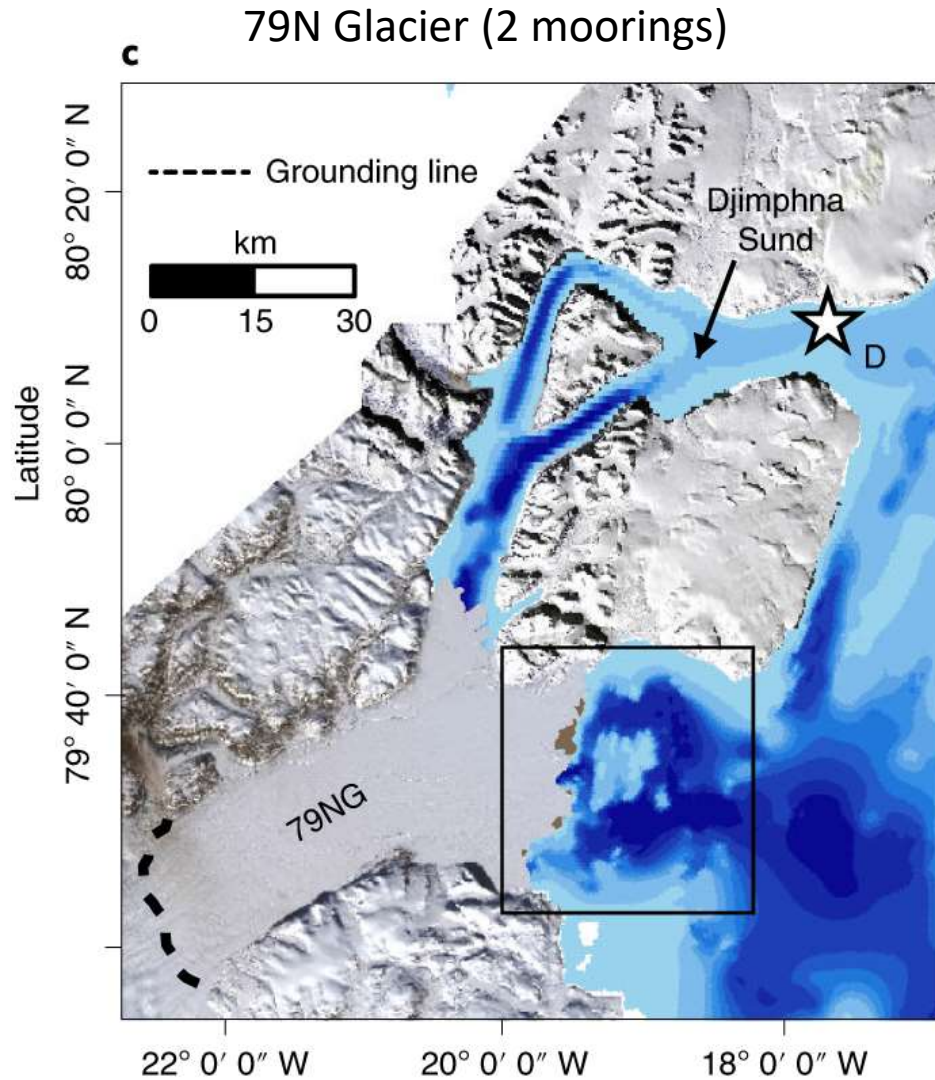
Warm Atlantic Water Pathways



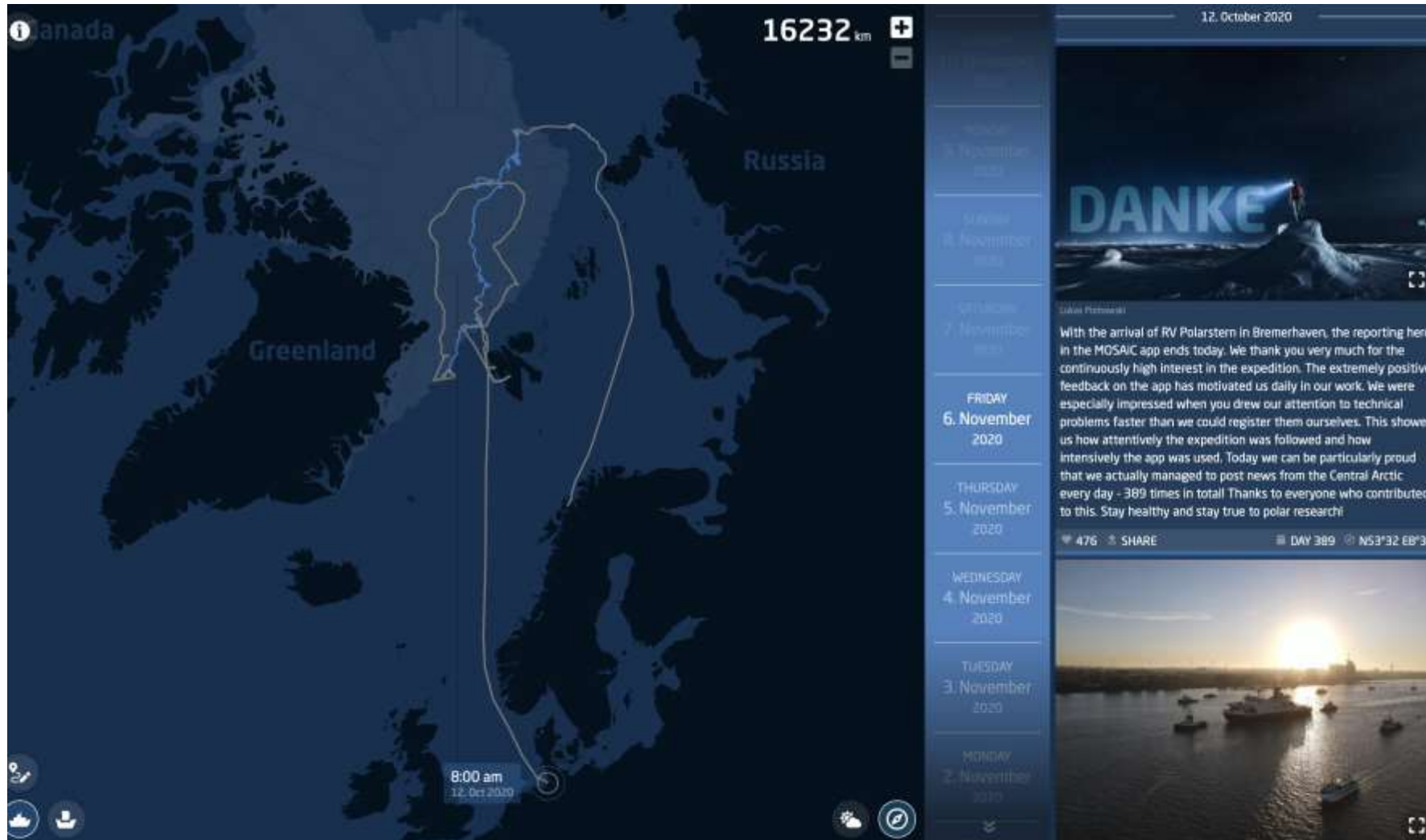
Use hydrographic observations to

- Identify large scale connections and variability between warm Atlantic water (WSC) and East Greenland Current
- How does the warm water enter the continental shelf? Role of shelf processes and troughs.
- How the AIW enters fjords and how topography influences and directs the flow.
Focus on 2 fjords: 79NG and Scoresby Sund.

Moorings still out there!



Link to Mosaik slides



<https://follow.mosaic-expedition.org/>