



PROJECT SUMMARY REPORT - 2015 STATION NORD CAMPAIGN

Subproject: Sea ice geochemistry: mercury, ikaite and phosphate

Actual field dates: 9 – 28 August
Field site: Station Nord, Greenland
Number of man-days in the field: 18

Summary:

Melt ponds sampling was carried out on an ice floe for both carbonate system and mercury study. And also we did a lot of water sampling along the glacier tongue. We found interesting seawater pH gradient along the glacier tongue, which might be caused by the runoff from glacier. This will be further confirmed by analyzing the water samples (DIC, TA etc) brought back in Winnipeg.

Photos:

Fig.1: Station Nord and its surroundings . Credit: Leif Toudal Pedersen

Fig. 2: Finding a possible channel for zodiac boat to sampling location. Credit: Yubin Hu

Fig. 3: investigating melt ponds on a multiyear ice floe. Credit: Yubin Hu

Participants:

Søren Rysgaard, Yubin Hu, Wieter Boone, Virginie Galindo, Jens Ehn, John Mortensen, Kunuk Lennert

Acknowledgements:

ASP, NSERC, ArcticNet, Canada Research Chairs Program, Canada Excellence Research Chairs Programme

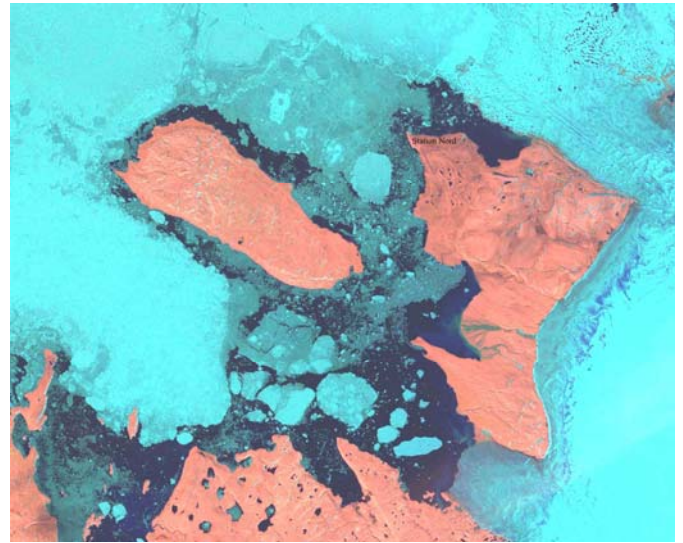


Figure 1



Figure 2



Figure 3